

# Foldable Large Container Project Europe

operated by



- The MAHLE BEHR-CHEP Pooling-System
- The Foldable Large Container (FLC)
- CHEP – Equipment Pooling Systems



# Foldable Large Container Pool

## The MAHLE BEHR-CHEP Pooling-System

# MAHLE

*Driven by performance*



## The MAHLE BEHR-CHEP Pooling-System

*Driven by performance*

### The CHEP Rental System with well-defined Charges

At the heart of the CHEP Automotive Pool is an activity-based billing of the containers. One of the pools's fundamental factors is that the daily hire charge is billed by the day. Beside the daily hire charge, pricing can be flexibly adapted to suit the requirements of the supply chain.

CHEP's invoices are sent out to pool candidates each month. Invoicing is in Euros but can also be converted to local currencies..

Each month, invoices are posted up in PORTFOLIO+PLUS but they can also be sent to customers by post or email if requested.

Billing is based on the commitment charge. Here we refer to an offtake of containers/FLC per storage position.

The minimum offtake is 4 storage positions.

#### Overview of storage position billing

4	storage positions 1208 =	24	FLC's	4	storage positions 1210 =	24	FLCs
9	storage positions 1208 =	54	FLC's	9	storage positions 1210 =	54	FLCs
19	storage positions 1208 =	114	FLC's	24	storage positions 1210 =	156	FLCs
33	storage positions 1208 =	198	FLC's				

The commitment charge is per container/FLC.

In addition to the commitment charge, a daily hire charge is made for each container/FLC.

The daily hire charge starts on the DOR (date of receipt) and ends on the DOD (date of dispatch).

So each pool candidate can be billed to the nearest container and day.



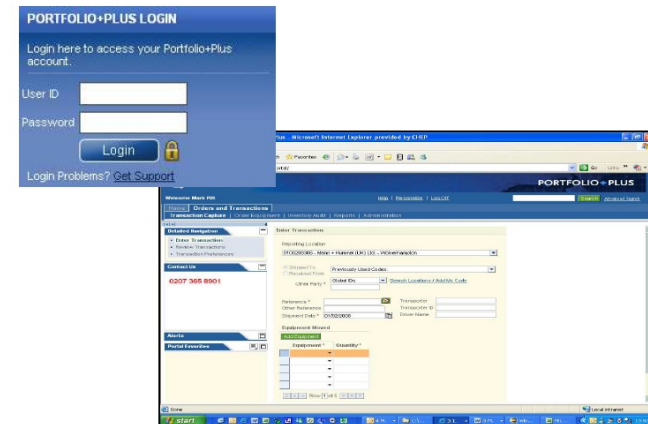
### PORTFOLIO+ PLUS

PORTFOLIO+ PLUS is a web-based application which can be described as a „hotline“ to CHEP. PORTFOLIO+ PLUS offers a multitude of options besides organising orders, transfers and returns.

For example, it can be used to analyse account information over selected indicators on a monthly basis.

Each Pool participant will be able to use PORTFOLIO+ PLUS after 30 minutes of training in order to declare empties or outgoing.

As a matter of fact, you are welcome to use EDI transmissions as well.



If any queries arise regarding your FLC account, your training on the Portfolio system or the placing of FLC orders please contact CHEP customer Service Support on +49 221 93571 700 or [customerservice\\_ac@chep.com](mailto:customerservice_ac@chep.com).



- The MAHLE BEHR-CHEP Pooling-System
- The Foldable Large Container (FLC)
- CHEP – Equipment Pooling Systems



# The Foldable Large Container (FLC)



*Driven by performance*

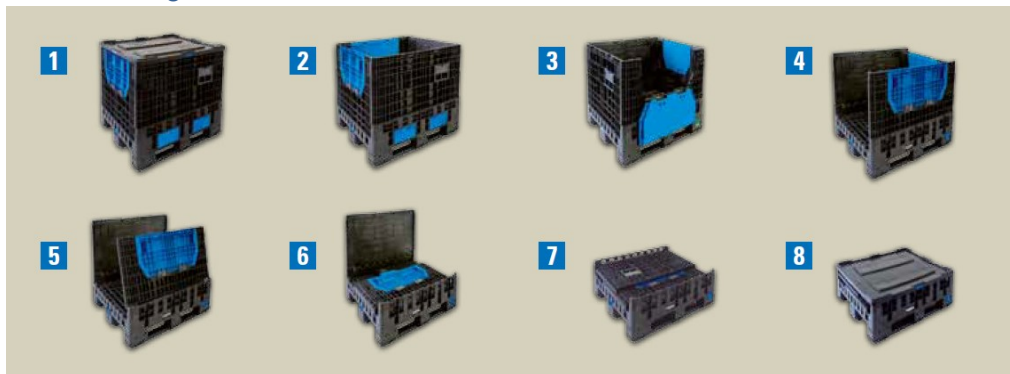
## Technical Facts

Type	FLC 120895	FLC 121097
<b>Dimensions (L x W x H in mm)</b>		
External Dimensions	1200 x 800 x 950	1200 x 1000 x 975
Internal Dimensions	1120 x 720 x 765	1120 x 920 x 790
Usable internal height	735	760
Height folded	406	406
Height folded in stack	376	376
<b>Logistics</b>		
Weight (kg)	54	62
Usable volume (l)	620	780
Load capacity static (kg)	500	500
Max. stack load static (kg)	2255	2276
Max. stack load dynamic (kg)	1128	1138
Load capacity racking (kg)	500	500
Units per pallet	6	6
Truck 80 m³ (235 cm height)	33 stack, 99 erected, 198 folded	26 stack, 52 erected, 156 folded
<b>Lid</b>		
Dimensions (mm)	1210 x 810	1207 x 1007
Height (mm)	30	50
Weight (kg)	~ 4	~ 5
Material	HDPE	HDPE
Temperature	usable from -20° up to +40°C	usable from -20° up to +40°C
Colour	black/green (RAL 6032)	black/green (RAL 6032)

1 Unit Load =  
3 FLC + 3 Slip Lids



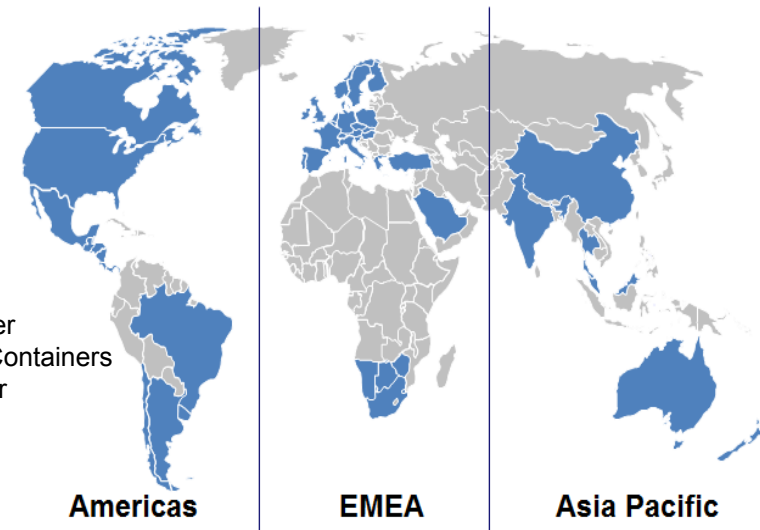
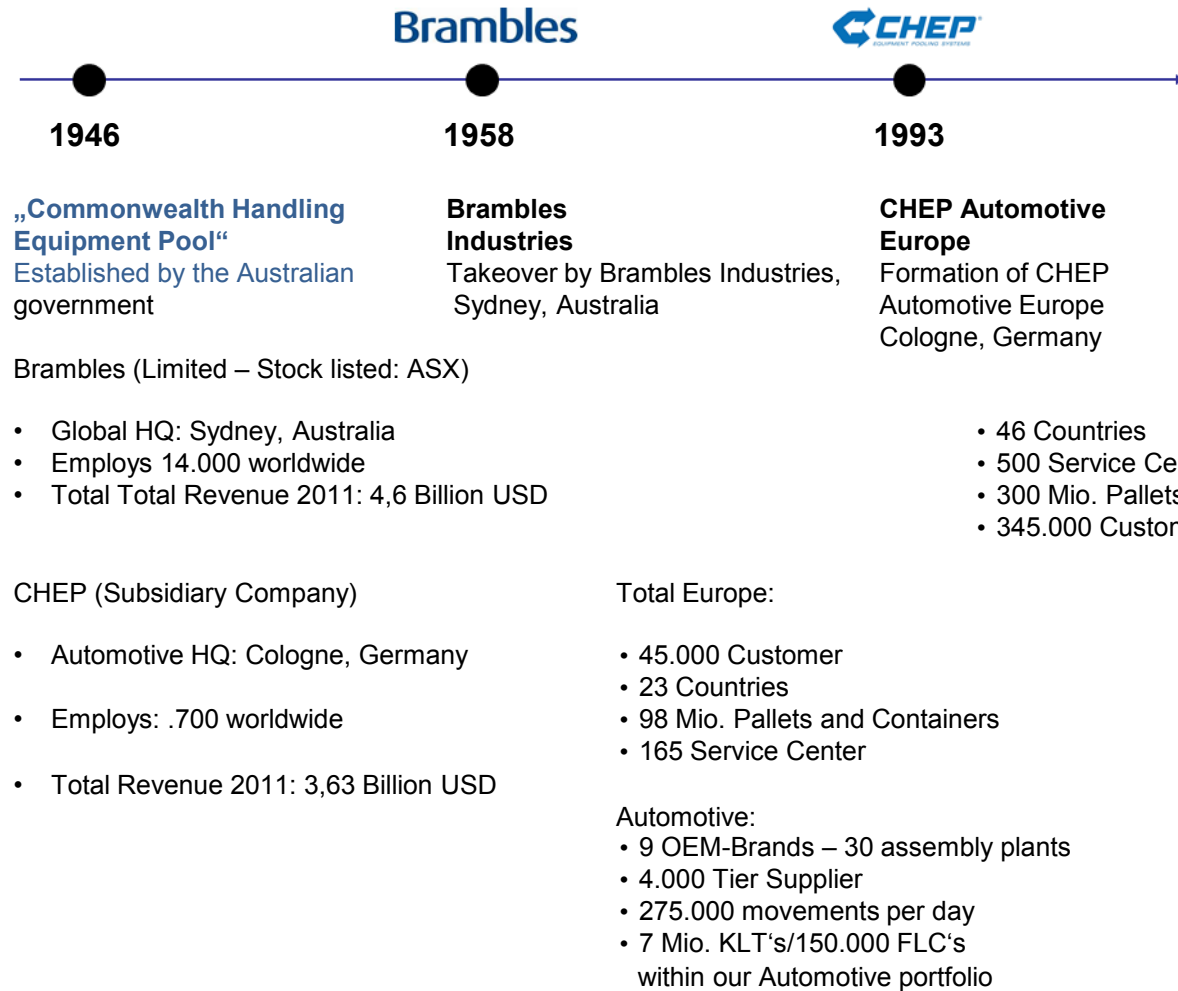
### Note on usage:



- The MAHLE BEHR-CHEP Pooling-System
- The Foldable Large Container (FLC)
- **CHEP – Equipment Pooling Systems**







Our Product Overview



*Pallet - wooden*



*Pallet - plastic*



*RPC*



*Automotive  
KLT Containers*



*Chemical Containers*



*Bulk Containers*



*Automotive  
FLC Containers*



## Contact Person

**MAHLE**

*Driven by performance*

If you have any further questions regarding  
the MAHLE BEHR FLC Pool, feel free to contact

Mr. Jochen Rothfuß

Phone: +49 711 501- 40503

Mail: [jochen.rothfuss@mahle.com](mailto:jochen.rothfuss@mahle.com)

For general requests related to CHEP, feel free to  
contact

Mr. Andreas Lenz

Phone: +49-172 2936238

Mail: [andreas.lenz@chep.com](mailto:andreas.lenz@chep.com)

